



GAT MONTHLY MEMBERSHIP PROGRESS REPORT

Results as of: 5/31/2023

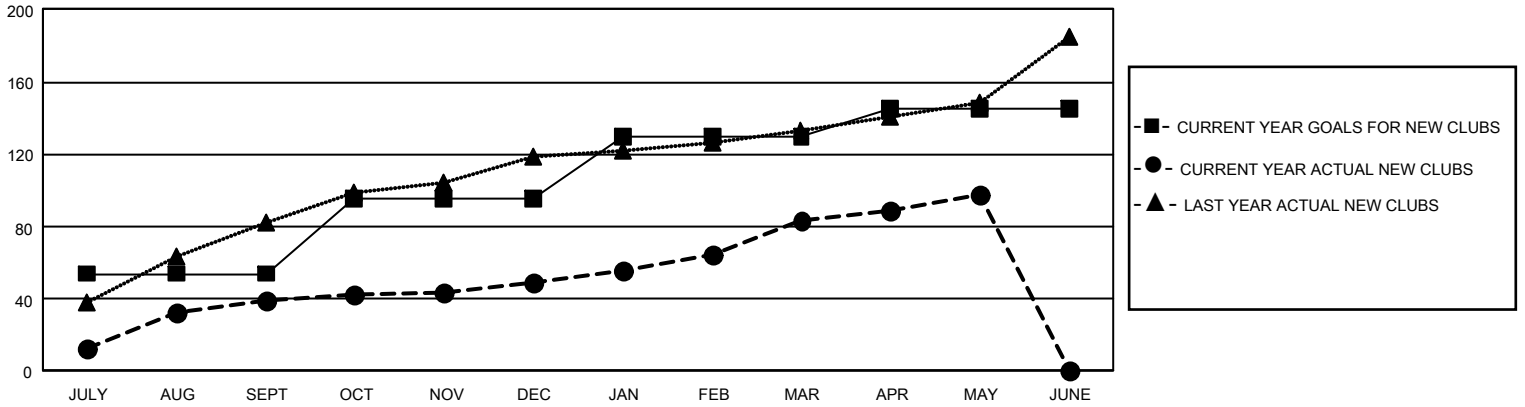
GMT Constitutional Area 6, Group L

REPORT DOES NOT INCLUDE CLUBS IN UNDISTRICTED AREAS.

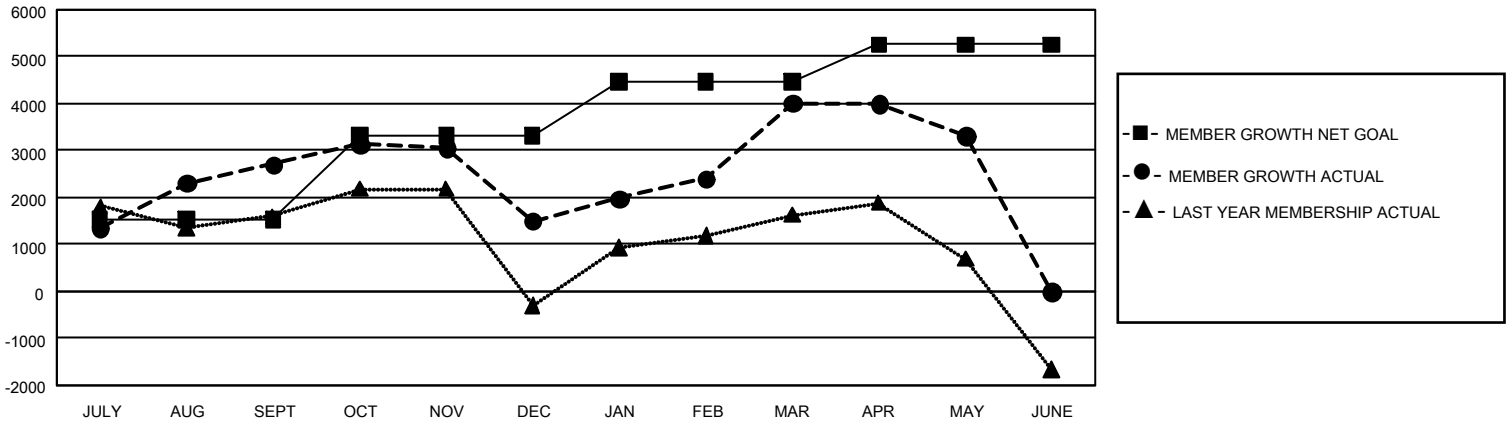
Clubs			
RESULTS FOR 2022-2023			
QUARTER	NEW CLUB GOAL	NEW CLUBS	DROPPED CLUBS
JULY/AUG/SEPT	162	39	11
OCT/NOV/DEC	123	10	44
JAN/FEB/MAR	105	34	20
APR/MAY/JUNE	45	15	3

Members			
RESULTS FOR 2022-2023			
QUARTER	MEMBER GROWTH NET GOAL	MEMBER GROWTH ACTUAL	DROPPED MEMBERS ACTUAL (including transfers)
JULY/AUG/SEPT	1520	5,060	1,242
OCT/NOV/DEC	1800	2,105	2,937
JAN/FEB/MAR	1155	4,453	1,113
APR/MAY/JUNE	790	1,532	1,973

GOALS AND ACTUAL NEW CLUBS CUMULATIVE



GOALS AND ACTUAL MEMBERS CUMULATIVE



DROPPED CLUBS: 78	1,357 CLUBS OF 1,820 ADDED 1 OR MORE NEW MEMBERS	GENDER DISTRIBUTION	
		MALE 53,435 (77.06%) FEMALE 15,893 (22.92%) NON BINARY 2 (0.00%) PREFER NOT TO ANSWER 8 (0.01%)	
DROPPED MEMBERS		CLICK HERE FOR CUMULATIVE MEMBERSHIP DATA	
DECEASED 226 CLUB CANCELLED 1,653 OTHER 5,387 TOTAL 7,266	TOTAL FAMILY UNIT MEMBERS 29,743 FAMILY MEMBERS PAYING HALF DUES 18,553		